

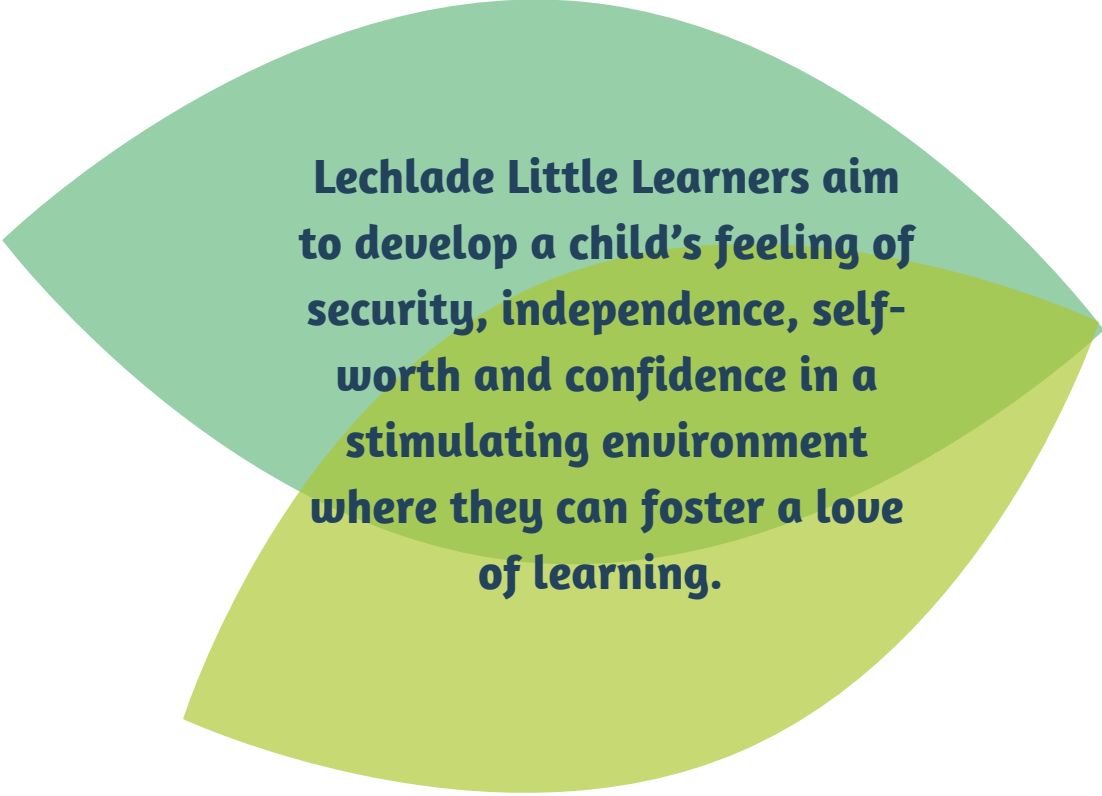
The background features several stylized, overlapping leaf shapes in shades of light blue, teal, and lime green. At the bottom, there are dark blue, irregular shapes resembling bushes or trees.

Lechlade Little Learners

Pre-school Prospectus



lecladelittlelearners@eygloucestershire.co.uk



Lechlade Little Learners aim to develop a child's feeling of security, independence, self-worth and confidence in a stimulating environment where they can foster a love of learning.

Welcome to Lechlade Little Learners

Children are at the heart of everything we do. We allow the children to follow their own interests and those of their peers to create a rich learning experience. We do not follow one set approach or pedagogy in our setting but draw from some of the greats such as Reggio and Montessori. One size does not necessarily fit all and that is most certainly the case with children, hence at Lechlade Little Learners we treat every child as an individual and celebrate their uniqueness.

When we expose children to different environments and various learning experiences, we allow them to explore their self-awareness and curiosity to enable them to gain a sense of the world around them. Once they leave Little Learners, they are fully prepared for the next stage of their young lives.

We hope that this prospectus will give you an outline of what we offer. We would be incredibly happy for you to arrange a visit to our pre-school, so you and your child can meet the staff, have a look around and ask any questions you might have.

Lechlade Little Learners aims to develop a child's feeling of security, independence, self-worth and confidence in a stimulating environment where children can take pleasure in learning. During each session, we operate a free flow approach, which allows the children to be in control of what they would like to play with and where they would like to play. Staff setup provocations to interest and entice the children and allow their curiosity and imagination to run free. The children are also able to self-select toys and resources throughout the session. Both our indoor and outdoor areas help to support children in the seven areas of learning and development of the Early Years Foundation Stage. We always ensure the seven areas of learning and development are covered with the resources on offer and use our own knowledge of the children to develop learning experiences throughout the day.

The seven areas of Learning and Development are as follows:

Prime areas

Communication and language

Physical development

Personal, social and emotional development

Specific areas

Literacy

Mathematics

Understanding the world

Expressive arts and design

Our curriculum

Intent

Lechlade Little Learners aim to develop a child's feeling of security, independence, self-worth and confidence in a stimulating environment where they can foster a love of learning. We want children to be exposed to new activities, environments and experiences, from social skills and creative expression to exploring the world around them. We build on the strengths and interests of each child, helping build a solid foundation on which they can develop their futures. We want children to be actively involved and motivated in their learning and creative in their own thinking.

We provide the crucial first step in children's learning and educational journey.

Implement

Everything we do at Little Learners forms part of our curriculum and at the centre of everything is the children. We use children's interests, experiences and staff's knowledge of child development to enrich children's learning and development and extend the understanding of the children in our setting. Our curriculum is like a jigsaw puzzle, each piece is part of a bigger picture.

Impact

Children feel happy, safe and secure at preschool and in the transition to school.

Children are confident in their own abilities and feel confident with their own ideas.

Children have a love for learning and gaining knowledge.

Children are aware of emotions and can self-regulate.

Hours and sessions

We accept children from the age of 2 years until school age. We are registered to accept government early years funding. Fees are charged at £7.00 per hour (September 2023) for all children who do not receive funding or do hours over their funding allowance. (please note that if your child is sick or goes on holiday during term time you are still liable for fees)

Our opening hours are:

Monday 9:00am – 3:00pm

Tuesday 9:00am – 3:00pm

Wednesday 9:00am – 3:00pm

Thursday 9:00am – 3:00pm

Friday 9:00am – 3:00pm

We are open for 38 weeks of the year term time only.

Sessions that we offer are:

Morning only 9:00am – 12:00pm

Morning & lunch 9:00am – 1:00pm

Afternoon only 1:00pm – 3:00pm

Afternoon & lunch 12:00pm – 3:00pm

We are restricted in numbers and so it may be that you cannot immediately have all the sessions you require but we endeavour to accommodate you as best we can and inform you as soon as additional sessions become available.

We request that children do a minimum of 2 sessions a week, this gives children consistency and allows them to settle quicker.



Invoicing

You will be invoiced at the start of each half term and is payable via bacs. Full payment must be made by the date stipulated on the invoice unless a prior agreement is made with the management team. Fees continue to be payable whenever a child is absent from Pre-school, whether it be for unexpected illness or a planned holiday.

Preschool numbers

We are registered to have 24 children in every session. We reserve the right to limit this to 20 for the benefit of the children. We work to, and often exceed, the government requirements for adult/child ratios, which are 1:4 for children 2 years and 1:8 for children over 3 years.

Staff and management

We are a committee run Pre-School with charity status. We adopted the Early Years Alliance constitution. Our committee is made up of parents and other interested parties. The committee is responsible for the general running of the group, is elected annually in May and includes a Chair, Treasurer and Secretary. Both committee and staff work together to ensure the Pre-School is always run efficiently and in the best interests of the children.

The Pre-School is staffed by a manager, a deputy manager and several early years' practitioners. The manager is also a Qualified Early Years Teacher.



Daily routine

8:45am – 9:00am - Children arrive

9:00am - Free flow

10:00am - 10:30 - Snack

10:30 - Circle time

10:40am - Free flow

11:30 - Nappies

12:00pm - Lunch

1pm – Free flow

2:20pm - Nappies

2:50pm - Story and snack

3:00pm - Home time



Registering at preschool

To enrol your child, you will need to complete a registration form. We use a secure online system called eyworks. The registration form is a digital form which will be sent out on request. No child will be able to start at Lechlade Little Learners without a complete registration form.

New starters will be invited to attend free settling sessions before they official start. These sessions are important for your child especially if they have never been in an early years setting, they allow them to become familiar with the setting, staff and other children and to realise that they aren't being left for ever and you will return. Settle sessions also give your child and their key person a chance to build a relationship and for the staff to see what your child does and doesn't like.

Key person

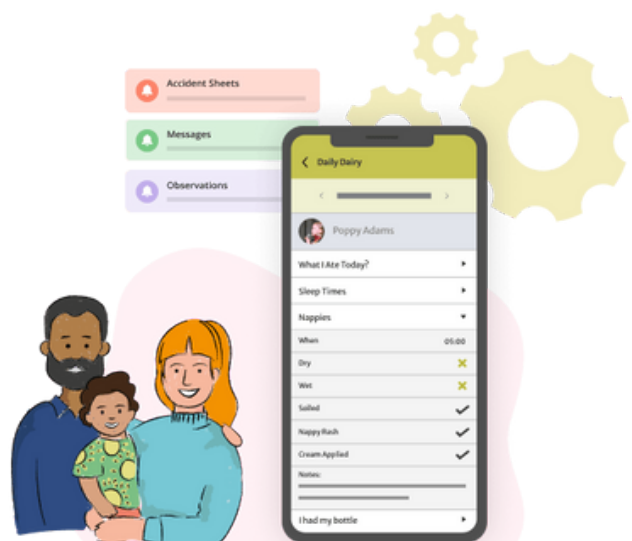
Your child will be allocated a key person when they start at pre-school. The key person will build a relationship with your child to ensure they feel safe and secure and have high Well-Being. This in turn will allow your child to have high involvement in their play which will foster and enable brain development and progress. We use an online Journal and registration system which your child will be registered onto. Our online journal system is called eyworks.



We use an online Management system called eyworks. The system includes registers, logging of nappies, accidents, medication along with a learning journey and invoicing.

We know that often it is difficult to fully hand over everything the children do on a day so eyworks allows us to keep everyone updated.

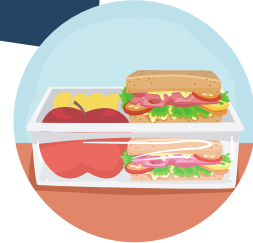
The learning journey section is added to regularly by staff with pictures of what the children have been doing. It also enables staff to link the observations directly to the eyfs. We actively encourage parents to engage and add to the learning journey.



PRESCHOOL CHECKLIST



Backpack



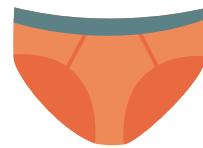
Packed lunch



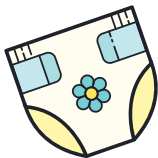
Water bottle



Extra set of clothes and socks



Extra underwear
(If potty training)



Nappies, wipes, cream
(If child in nappies)



Seasonal outerwear
(Wellies/ waterproofs)



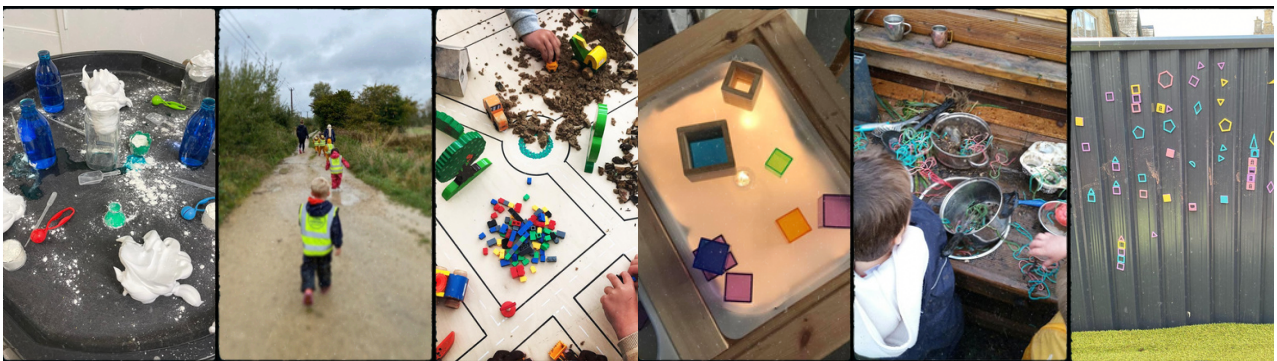
Other important information

Contact details – You will be asked to provide us with contact details for yourself and other emergency contacts. It is extremely important that we have up to date and current details in case your child is taken ill or has an accident during a session. This must be a telephone number we can reach you on during your child's session. Please inform us if the details change.

Alternative person collecting your child – We will not send your child home with anyone other than those named on the registration form. If you have arranged collection by someone else you must inform us. We will then ask for the child's password before releasing them at the end of their session.

Absences – If for any reason your child is absent from preschool please let us know as soon as possible by calling 01367 253653 or logging them absent through the eyworks app.

Infections diseases/ sickness/ allergies - Should your child contract an infectious disease, you must notify the Pre-School immediately. In the case of sickness or diarrhoea, the child must NOT attend the Pre-School until 48 hours after all symptoms have ceased. Please inform the staff if your child suffers from or develops any allergies.



Medication - If your child is on prescribed medication please let us know. If possible, the child's parent should administer medicine. If not, we need to keep a record of information from the parents giving clear instructions about the dosage. All medication that needs to be administered at Little Learners will be registered and logged on eyworks.

Policies – Lechlade Little Learners Pre-School has an extensive range of policies and procedures. All these can be found on the website: www.lechladelittlelearners.co.uk alternatively if you would like to see a hard copy ask the Manager or Deputy.

Complaints - Complaints should be addressed to the manager in the first instance or to the Chair of the Committee. All complaints will receive a response within 28 days. If the matter is unresolved, you should contact:

Ofsted National Business Unit
Piccadilly Gate
Store Street
Manchester
M1 2WD
Tel: 0300 123 4666

When you enter this preschool.....

You are scientists

You are explorers.

You are important.

You are respected.

You are a friend.

You are the reason we are here!